

SS12 EXPOSED SLIDING DOOR

Opus Exposed Sliding Door System

SS12 Overview

The Opus exposed SS12 sliding door hardware kit includes everything needed to suit standard & large sized alcove/corner shower situations with single or double side panels. It is supplied with a 1260mm standard undrilled rail along with a finger door pull, rollers, stoppers, (wall, glass and rail) connectors, anti-jump pins, reversible door/floor guide and adjusting tools. Suits 8-10mm glass doors and comes in up to 9 different finishes, offering a versatile solution to sliding door configurations.



Key Features

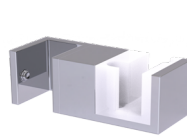
- The top track is a 30×10mm, 1260mm long stainless steel rail, fixed to the wall or glass side panels using stainless steel fixings included in the kit.
- The hangers are satin stainless steel with nylon washers, and the floor guide is stainless steel with adjustable nylon walls to accommodate varying glass thicknesses.
- The track stops are satin stainless steel with rubber bumper stops.
- Maximum door weight 45kg. Door height and width are limited only by the weight of the glass — customers should ensure their chosen dimensions do not exceed this. A 3m rail extension is available for larger configurations.
- Available finishes: Polished Chrome, Brushed Stainless, Black, Brushed Brass, Brushed Nickel, Gun Metal, Brushed Bronze, and Brushed Copper, and White.

Scope of Use

- Opus SS12 Exposed Sliding door is designed for glass doors up to a maximum weight of 45kg.
- Opus SS12 Exposed Sliding door is an elegant frameless glass door system for internal applications that provide a sleek look.
- Two sets can be joined together with an OSS-013 corner connector to create a corner dual-door application.
- Longer rails can be ordered in either 2 or 3 meters to allow for a wider opening.

OPUS POINT FIX SLIDING DOOR SYSTEM PARTS

- **OSS-12** Rectangular rail to hang door off
(30x10mm 1.26m)
- **OSS-002** Reversible door guide for 8-10mm glass
(Cut floor channel 20mm short)
- **OSS-003** Rail to glass connector
- **OSS-004** Door roller
- **OSS-005** Door stop
- **OSS-006** Glass to rail connector
- **OSS-007** Security anti-jump pin
- **OSS-008** Rail to wall connector
- **OSS-010** Ring finger pull
- **OSS-2M** Rectangular rail to hang door off
(30x10mm 2m)
- **OSS-3M** Rectangular rail to hang door off
(30x10mm 3m)



OSS-002



OSS-003



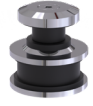
OSS-004



OSS-005



OSS-006



OSS-007



OSS-008



OSS-010



OSS-12

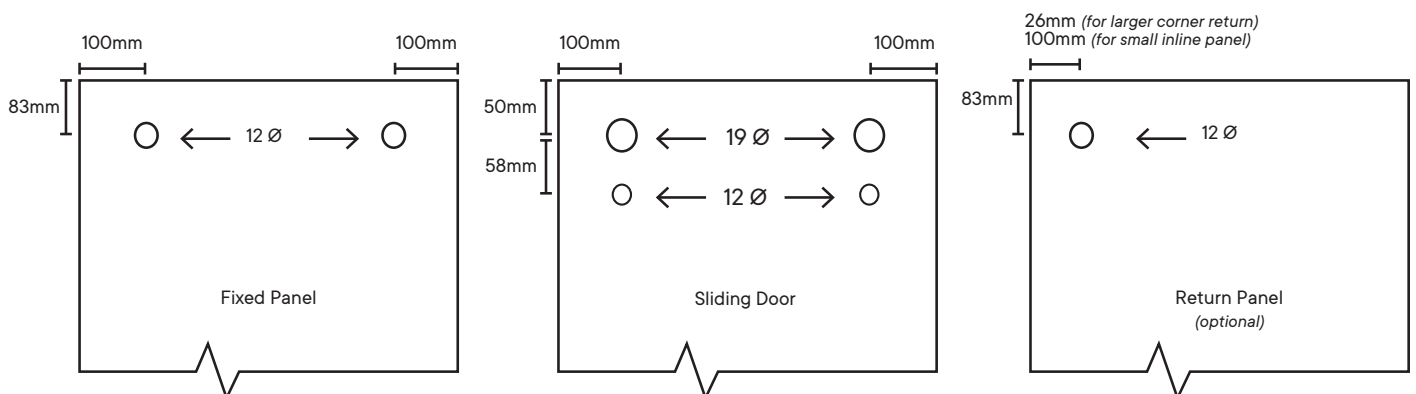


OSS-2M



OSS-3M

GLASS CUT-OUT DETAILS



* Use 2x Fixed Panel details for a 3x panel alcove configuration.